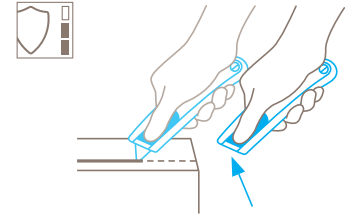


TECHNICAL DATA SHEET

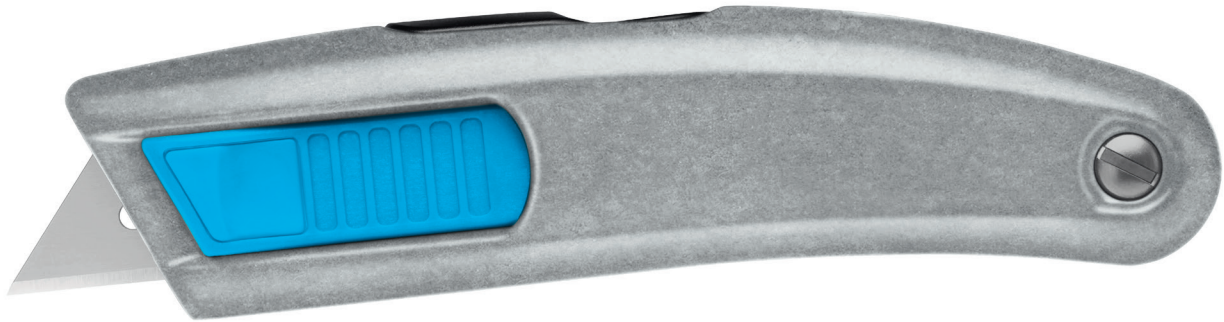
SECUPRO MEGASAFE  
NO. 116004

Safety technology



**Fully automatic blade retraction – a very high degree of safety**

The fully automatic blade retraction of the SECUPRO MEGASAFE guarantees a very high degree of safety from cut injuries. The blade withdraws into the handle immediately after leaving the material being cut. Even if the slider is still being activated.



SAFETY KNIFE MADE OF UNPAINTED ALUMINIUM WITH FULLY AUTOMATIC BLADE RETRACTION.

Order No. 116004.19

**Quality that's visible – unpainted. With stainless steel trapezoid blade.**

Would you like to have a safety knife with a large blade extension? Or are you looking for a cutting tool for use in sensitive sectors? In both cases, the unpainted SECUPRO MEGASAFE is an excellent choice. Thanks to a cutting depth of up to 20mm it does not shy away from any challenge. Your safety is still guaranteed since the fully automatic blade retraction functions even when you decide not to fully extend the blade. Stainless steel means that you can also use the blade in a moist environment for longer periods without problems.

**Robust unpainted handle**

The high-quality SECUPRO MEGASAFE handle is 100% aluminium and is therefore highly robust. The unpainted version is ideal for all standard cutting tasks in sensitive sectors.

**Change without opening**

Blade change is easy and safe. Simply push down on the

back end of the rocker device located on the topside of the safety knife, and push the slider completely forward. The blade is ready for changing.

**Perfect handling**

The lightly rounded handle fits particularly well in your hand. Your thumb doesn't get a raw deal either: soft grip on the slider makes for a pleasant, slip-resistant resting pad.

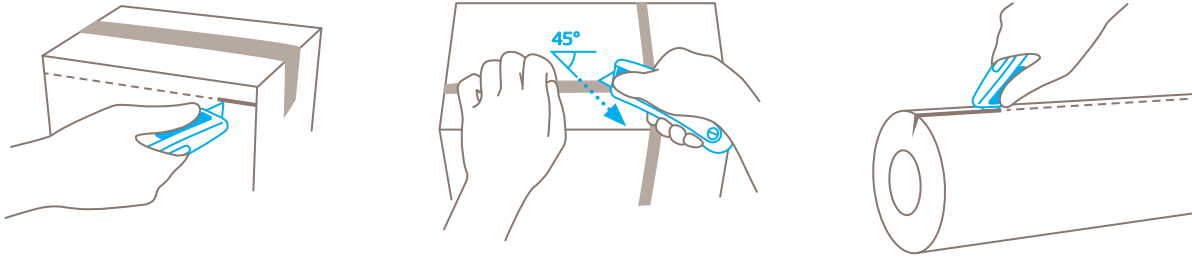
**Double-sided slider**

With the right hand? With the left hand? No need to ask this question! The SECUPRO MEGASAFE is fitted with a slider that's accessible from both sides. Choose for yourself!

**2-cutting edge blade**











Before you need to change the stainless steel quality blade, you have the chance to turn it over once. Usage time of the blade is doubled and fatigue is held at bay: with a simple flip of the blade, your SECUPRO MEGASAFE will cut like new.

## USAGE



## PRODUCT FEATURES

### Technical features

 Very high safety	 Tool-less blade change	 Very abrasion resistant	 Ergonomic
 2-cutting edge blade	 Cutting depth 20	 Ceramic blade compatible	 Soft grip
 For right and left handers	 Individually engravable LASER		

### Main cutting materials

 Cardboard: up to 3-ply	 Plastic strapping band	 Bagged goods	 Slabbing material off a roll
 Wrapping, stretch and shrink foil	 Tape	 Layers of foil or paper	 Rubber
 PVC	 Yarn, cord	 Felt	 Fleece
 Textile, material			

### Installed blade



**NO. 199**  
0.63 mm, deep-edged, stainless

### Optional blade



**NO. 99**  
0.63 mm, deep-edged



**NO. 60099**  
0.63 mm, rounded blade tips, deep-edged

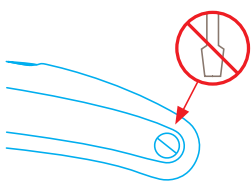


**NO. 60099C**  
0.65 mm, ceramic, rounded blade tips, deep-edged

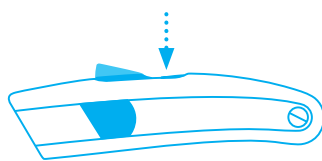


**NO. 98**  
0.63 mm

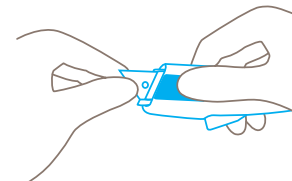
## BLADE CHANGE



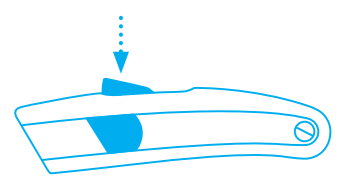
Do not **unscrew** the handle to change the blade!



Press the **rocking element downwards**.



Move the slider fully forwards. Turn the handle so that the **transparent blade cover faces upwards**.



Now **rotate or change the blade** and carefully release hold of the slider. Close the rocking device.

## SERVICES OFFERED



Safety poster



Training video



Technical data sheet



Consulting service

## PRODUCT AND PACKAGING DETAILS

Order No.	NO. 116004.19	Packaging unit	1 in single unit box
Knife size (L x W x H)	153 x 26 x 38 mm	Size Single unit box	160 x 28 x 46.0 mm
Weight knife	140.0 g	Weight single unit box	159.0 g
Basic material	Aluminium	EAN Code single unit box	4002632802560
Cutting depth	20.1 mm	Quantity in outer pack	10 knives
		Size outer pack	144 x 100 x 168.0 mm
		Weight outer pack	1645.0 g
		EAN Code outer pack	4002632852565
		Customs tariff number	82119300

## SAFETY CERTIFICATE

Date of issue	14.04.2023
Certification	GS certificate NO. S 60169806

### Certificates and awards



## SAFETY ADVICE

To ensure that you use your new MARTOR knife safely and most effectively, please read and note the following user-instructions. Please keep the written guide in a safe place so that you can access it at any time.

**1. General application instructions:** Please always use the product carefully for manual cutting work only and not for any purposes other than those that are intended. Please take the correct handling and the proper use of the knives into account in this regard. As an additional safety measure, we recommend the wearing of safe gloves.

**2. Special application instructions to avoid the danger of injuries:** Always take great care when handling the product. Before first use, familiarise yourself with the safety technology and how it works. Before every further use, check the knife for proper functioning. Only use cutting tools that are in perfect condition with sharp, clean and undamaged MARTOR blades. Also make sure that the knife's operation is not impaired by the material to be cut or by dirt or particle deposits around the blade. **CAUTION: The blade is sharp and can result in serious and deep cuts. Therefore, never reach into the blade!** Do not place your free hand in the line of cutting and never cut directly towards you.

**3. Replacement of spare parts:** Replace any blades that become dull at the right time! Use only the replacement blades from MARTOR for this purpose. Dispose of old blades in a proper fashion. They should not be placed in a waste paper bin, as this poses a considerable danger of injuries. Never perform any repairs yourself. If the knife shows signs of aging or any other wear, e.g. which impair safety features, blade changing or usage, the knife must be taken out of service and replaced. Do not modify this product in any way. Modifications of any kind may impair product safety. **CAUTION:** The risk of injury caused by manipulation of this product is extremely high.

**4. Non-use of the knife:** Always secure the blade in such a way (depending on product type) that injuries due to cuts are excluded. Store the knife in a secure place.

**5. Care instructions:** To guarantee a long service life, always keep the knife clean and do not expose it to unnecessary soiling and humidity.

**CAUTION: No liability will be assumed for consequential losses. Subject to technical changes and errors! This knife does not belong in the hands of children!**

## ACCESSORIES

---

### BELT HOLSTER M

NO. 9921



What do you do with your cutting tools when you are not actually using them? The MARTOR BELT HOLSTER M is a robust holder that allows you to carry all midsize MARTOR knives as well as our safety scissors at all times. In addition, the interior and exterior pockets are designed to allow you to load different tools: for example you can carry an extra safety knife, a pen and a pack of blades. The MARTOR BELT HOLSTER is the ideal place to stow your tools safely when moving from A to B - and have them at hand, as soon as they are required.

### BELT HOLSTER XXL

NO. 9924



The BELT HOLSTER XXL is a real space miracle. With it, you not only transport your MARTOR cutting tools safely from A to B. All other work utensils are always within reach. The BELT HOLSTER XXL has two large compartments: the inner one is lockable, the outer one is equipped with a knife safety device. You are also well equipped when it comes to carrying options. Choose flexibly between strap, Velcro fastener and clip.

### USED BLADE CONTAINER

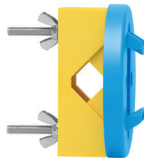
NO. 9810



You can fill the USED BLADE CONTAINER with the content of your SAFEBOX. Or directly with your used blades. When the box is full, turn the lid until it shuts. Now the box cannot be reopened. The next step is to safely and completely dispose of the filled USED BLADE CONTAINER as normal waste.

### WALL MOUNT BRACKET USED BLADE CONTAINER

NO. 9845



Include it in your order now! With this mounting bracket you can fix your USED BLADE CONTAINER to a central location. Use the clamp and screws and nuts supplied with the product to attach it to either a pipe or a rod.

### SAFEBOX

NO. 108000



The SAFEBOX is large enough to store a large number of used blades safely. And at the same time, it is compact enough to carry with you. The two slits are not only used for filling, but also to „shorten“ your snap-off blades. When your SAFEBOX is full, empty it into your USED BLADE CONTAINER.

---

## MANUFACTURER

MARTOR KG | Lindgesfeld 28 | 42653 Solingen | Germany  
T +49 212 73870-0 | info@martor.de | www.martor.com