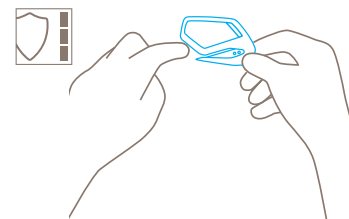


## TECHNICAL DATA SHEET

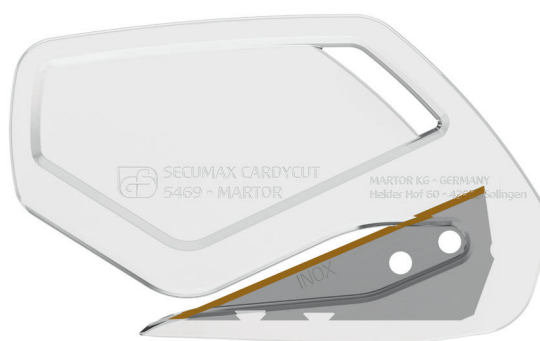
### SECUMAX CARDYCUT NO. 546912

#### Safety technology



#### Concealed blade – a maximum degree of safety

The SECUMAX CARDYCUT blade is not an open one, but is hidden from people and goods. This provides you with the highest degree of safety from cut injuries and from damage to goods.



#### SLENDER DISPOSABLE SAFETY KNIFE WITH CONCEALED BLADE, ESPECIALLY FOR CUTTING FOIL AND PAPER.

**Order No.** 546912.12

#### Ventures where others won't. Transparent and stainless steel.

You will always gain insight with the SECUMAX CARDYCUT since it is made of plastic that is clear as glass. This makes visual control easier when cutting film and paper. Thanks to its small and compact design, it runs very smoothly, for example, when cutting into curves and in especially narrow slits. As a specialist for thin single-layer film it is used frequently in the automobile industry.

#### Safety for all and for everything

The injected and concealed blade does not come close, either to you or to your goods. In other words, you only cut what you really want to cut.

#### Singularly good

The SECUMAX CARDYCUT is a disposable safety knife. Since you do not have to change the blade, neither you nor your

staff can come into contact with it. An additional benefit as far as safety is concerned.

#### Blade right at the front

The SECUMAX CARDYCUT comes right to the point, since the blade starts right at the front. The narrow gap between the blade and plastic guides the cutting material. Both enhance control when cutting.

#### No rust

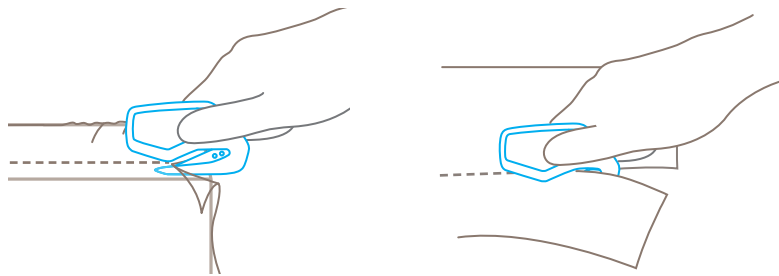
Your cutting tool is fitted with a stainless steel quality blade. The TiN coating ensures that you can cut easily and more effectively for longer with your SECUMAX CARDYCUT.

#### Ideally placed

You won't misplace the SECUMAX CARDYCUT so easily. The safety knife is equipped with an eyelet so it can be kept in an easy to find place.

## USAGE

---



## PRODUCT FEATURES

---

### Technical features



Maximum safety



Disposable knife



Ergonomic



Cutting depth



For right and left handers



Stainless



TiN-coated



Lanyard hole



Printable for promotional purposes

### Main cutting materials



Wrapping, stretch and shrink foil



Tape



Layers of foil or paper



Yarn, cord

### Installed blade

Blade thickness 0.30 mm.

## BLADE CHANGE

---

The TiN-coated stainless steel blade is moulded into the body of the knife and cannot be changed.

## SERVICES OFFERED



Video



Technical data sheet



Consulting service

## PRODUCT AND PACKAGING DETAILS

Order No.	NO. 546912.12	Packaging unit (PU)	10 in box (loose)
Knife size (L x W x H)	71 x 3 x 43 mm	Size (PU)	83 x 35 x 47 mm
Weight knife	6.6 g	Weight (PU)	79.5 g
Basic material	Plastic	EAN Code (PU)	4002632801389
Cutting depth	1.65 mm	Quantity in outer pack	-
		Customs tariff number	82141000

## SAFETY CERTIFICATE

Date of issue	23.10.2018
Certification	GS certificate NO. 603847-6480-55094-2018

### Certificates and awards



## SECURITY ADVICE

To ensure that you use your new MARTOR knife safely and most effectively, please read and note the following user-instructions. Please keep the written guide in a safe place so that you can access it at any time.

**1. General application instructions:** Please always use the product carefully for manual cutting work only and not for any purposes other than those that are intended. Please take the correct handling and the proper use of the knives into account in this regard. As an additional safety measure, we recommend the wearing of safe gloves.

**2. Special application Instructions to avoid the danger of injuries:** Only use cutting tools that are in perfect condition and have sharp, clean and undamaged MARTOR blades. Employ the utmost care when handling the knives. Prior to use, familiarise yourself with the safety features and their functioning. Ensure that these safety features are not impaired by the type of material to be cut. CAUTION: The blade is sharp and can result in serious and deep cuts. Therefore, never reach into the blade! Do not place your free hand in the line of cutting and never cut directly towards you.

**3. Replacement of spare parts:** This knife is a disposable product. It is not designed to have its blades changed or any other of its components replaced. If the knife shows signs of aging or any other wear, e.g. which impair the safety features or usage, the knife must be taken out of service and replaced. Do not modify this product in any way. Modifications of any kind may impair product safety. CAUTION: The risk of injury caused by manipulation of this product is extremely high.

**4. Non-use of the knife:** Always secure the blade in such a way (depending on product type) that injuries due to cuts are excluded. Store the knife in a secure place.

**5. Care instructions:** To guarantee a long service life, always keep the knife clean and do not expose it to unnecessary soiling and humidity.

**CAUTION: No liability will be assumed for consequential losses. Subject to technical changes and errors! This knife does not belong in the hands of children!**

## MANUFACTURER

MARTOR KG | Lindgesfeld 28 | 42653 Solingen | Germany  
T +49 212 73870-0 | info@martor.de | www.martor.com